



# MONTHLY MEMBERSHIP PROGRESS REPORT

District 2 S4

Results as of: 3/31/2017

GMT: HAL GRIFFIN

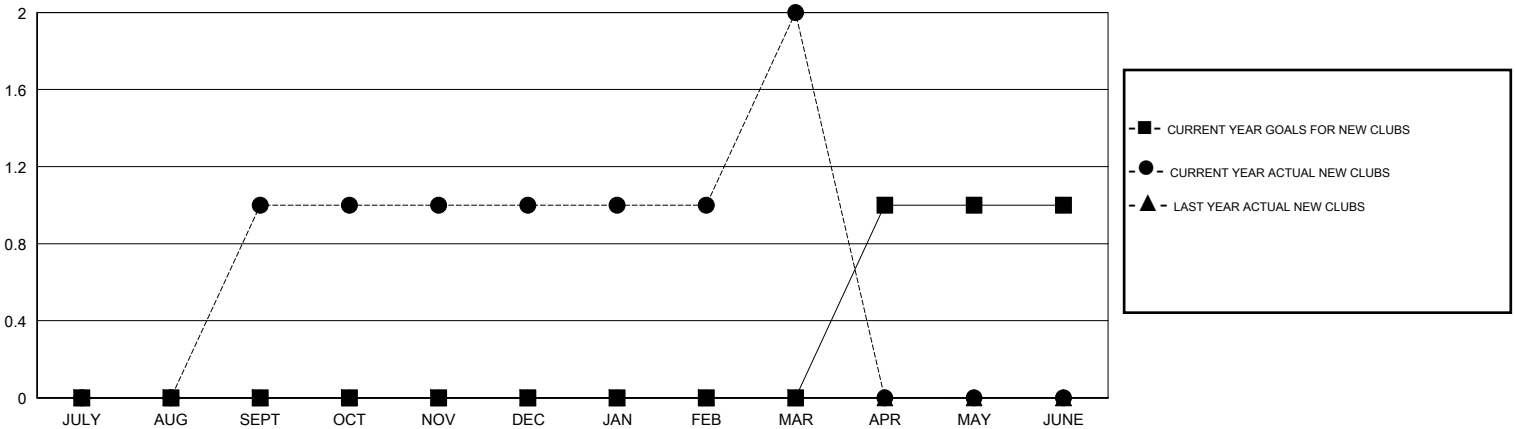
LOCATION TEXAS

GMT CA

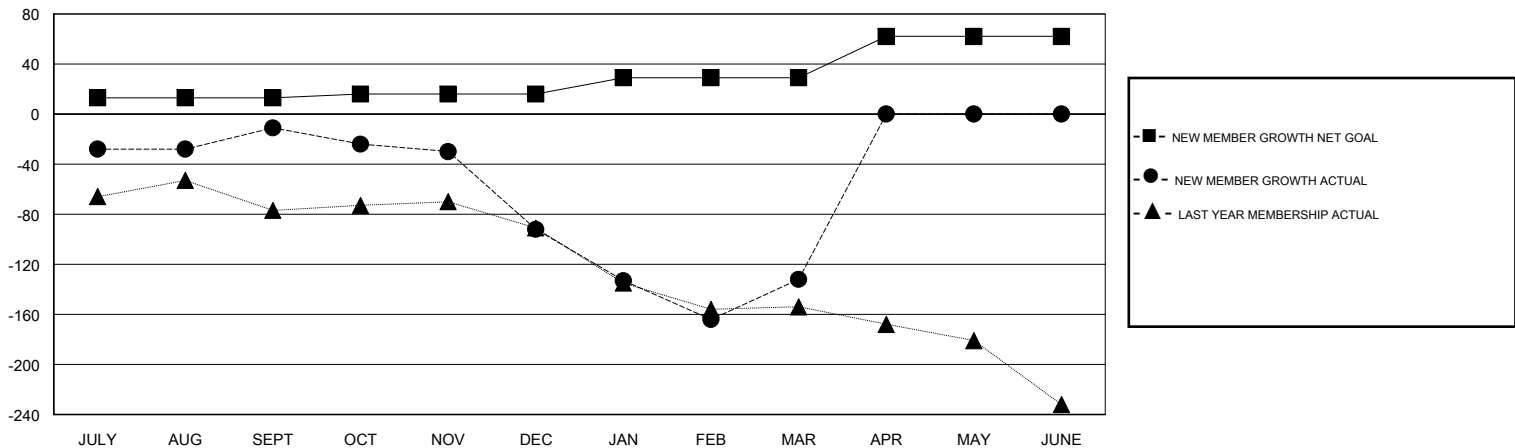
Clubs			
RESULTS FOR 2016-2017			
QUARTER	NEW CLUB GOAL	NEW CLUBS	DROPPED CLUBS
JULY/AUG/SEPT	0	1	1
OCT/NOV/DEC	0	0	2
JAN/FEB/MAR	0	1	0
APR/MAY/JUNE	1	0	0

Members			
RESULTS FOR 2016-2017			
QUARTER	NEW MEMBER GROWTH NET GOAL (not reinstated or transfers)	NEW MEMBER GROWTH ACTUAL (not reinstated or transfers)	DROPPED MEMBERS ACTUAL (including transfers)
JULY/AUG/SEPT	13	107	118
OCT/NOV/DEC	3	55	136
JAN/FEB/MAR	13	94	134
APR/MAY/JUNE	33	0	0

GOALS AND ACTUAL NEW CLUBS CUMULATIVE



GOALS AND ACTUAL MEMBERS CUMULATIVE



DROPPED CLUBS: 3	57 CLUBS OF 85 ADDED 1 OR MORE NEW MEMBERS	<u>GENDER DISTRIBUTION</u>	
DROPPED MEMBERS		MALE	1,389 (61.19%)
DECEASED	16	FEMALE	881 (38.81%)
CLUB CANCELLED	27	TOTAL FAMILY UNIT MEMBERS	347
OTHER	345	FAMILY MEMBERS PAYING HALF DUES	177
TOTAL	388		

[CLICK HERE FOR CUMULATIVE MEMBERSHIP DATA](#)